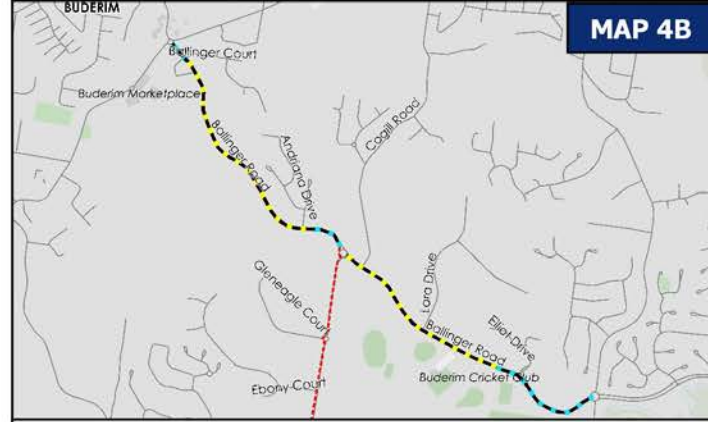
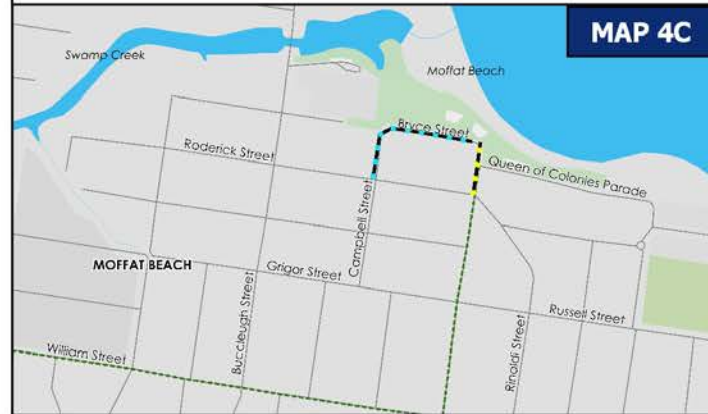




OCEAN DRIVE CLOSURE: To be implemented Sunday 16 July between 6:00am and 7:30am. Local access permitted southbound between Cottonwood Street and Resort (including to North Shore Road), and northbound from the Resort and North Shore Road (access limited to between event waves). Note: closure times are approximate and may differ on the day of the event.



BALLINGER ROAD CLOSURES (both northbound only): To be implemented Friday 15 July between 5:30am and 7:00am (south of Stringybark Road roundabout) and between 9:00am and 1:00pm (north of Stringybark Road roundabout). Local access permitted both directions from Dixon Road roundabout to Buderim Cricket Club Driveway, northbound between Stringybark Road roundabout and Andriana Drive, and southbound between Balingier Court and Andriana Drive (via escort only). Note: closure times are approximate and may differ on the day of the event.



MOFFAT BEACH CLOSURES: To be implemented Saturday 15 July between 4:00am and 8:00am. Local access permitted on Campbell Street, between Roderick Street and Bryce Street. Local access also permitted on Bryce Street between Campbell Street and Eleanor Shipley car park access. Note: closure times are approximate and may differ on the day of the event.